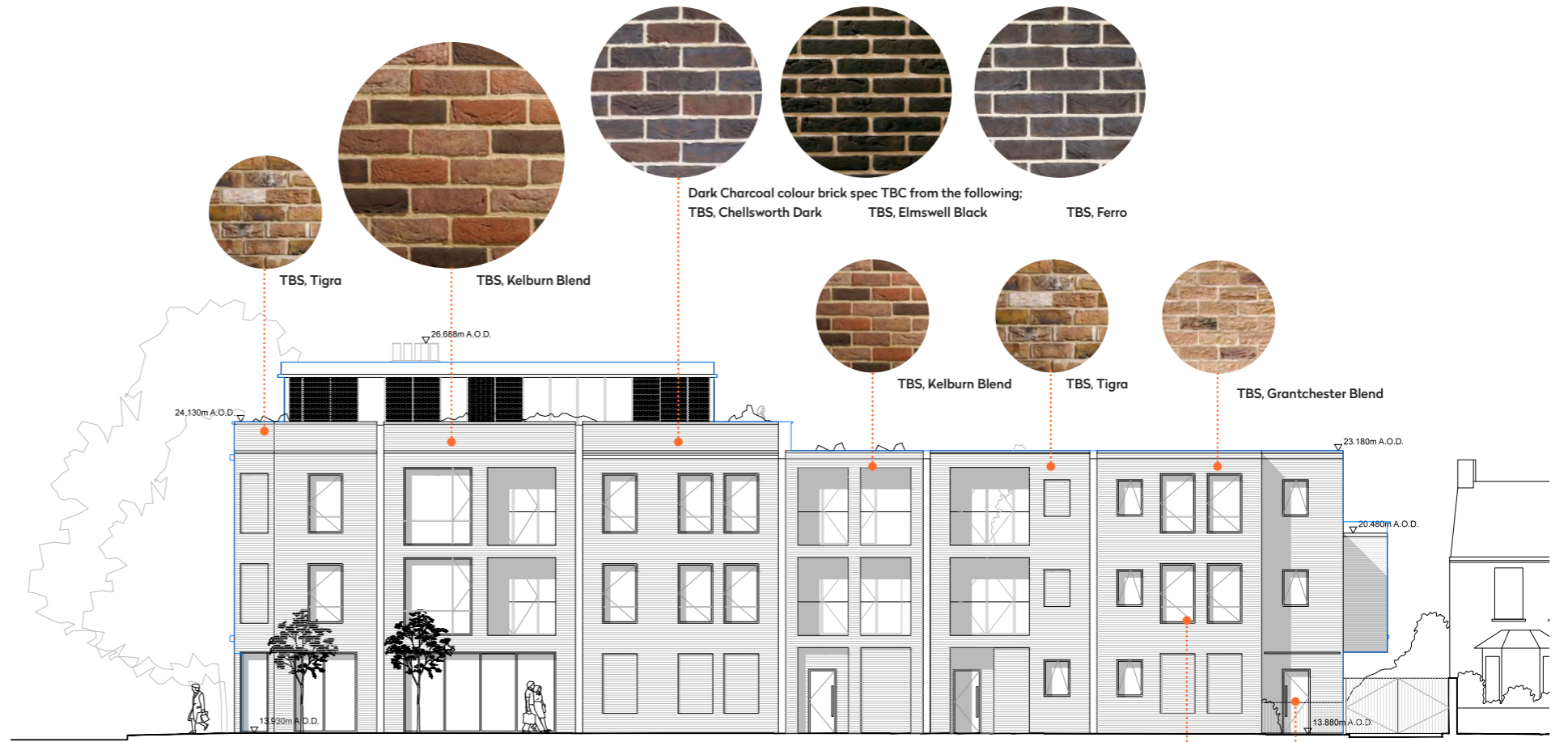




Proposed East Elevation (Haydons Road)



Proposed North Elevation (Quicks Road)

All bricks supplied by Traditional Brick And Stone

Composite Timber/ Aluminium Window  
RAL: 9002 - Pearl Light Grey

Composite Timber External Doorset  
RAL: 9002 - Pearl Light Grey



Photo Realistic View From Haydons Road



Photo Realistic View From Haydons Road Recreation Park

A	AMENDED PLANNING ISSUE	05/02/16	TR
-	PLANNING ISSUE	27/11/15	JH
REVISION			DATE/DRAWN



PROJECT	94-96 HAYDONS ROAD		
	1-3 QUICKS ROAD		
DRAWING TITLE	PROPOSED EXTERNAL FACADE MATERIALS		
DATE	FEB 2016	SCALE	NTS
DRAWN	JH	CHECK	TR
STATUS	PLANNING		
JOB NUMBER	AI-2232		
DRAWING NUMBER	QK-401	REV	A

This page is intentionally left blank